



DATA SHEET

Sigma DSE Direct-to-Card Printer

Sigma Innovation Designed for Essential Needs

HIGHLIGHTS

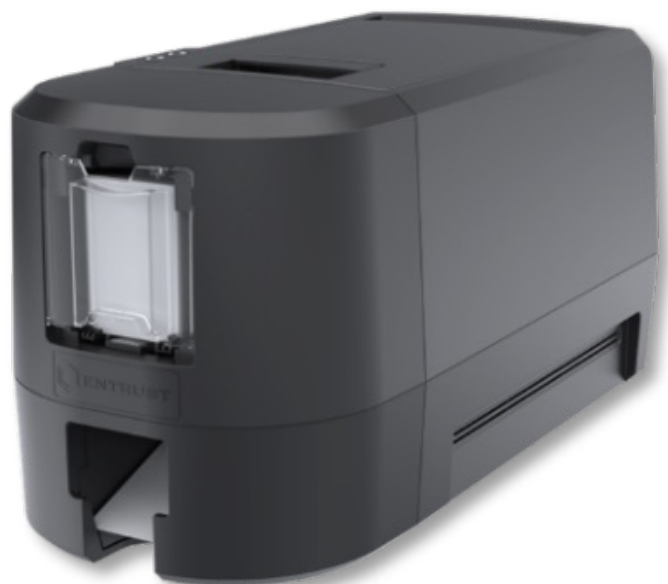
The Entrust Sigma DSE ID Card Printer is specifically designed for today's cloud environments, meeting your essential needs while also giving you the ability to easily issue secure identities.

- **Simple:** From unboxing to issuing ID cards and mobile flashpasses to managing your printer, we made sure Sigma was the most user-friendly ID card issuance solution in the world
- **Quality:** Our industry expertise and high-quality design are packaged into an economic printer for essential needs
- **Affordable:** Competitively priced in-market to meet the needs of any badging or credential printing job, without sacrificing on efficiency and excellence

KEY FEATURES & BENEFITS

The World's Most Sophisticated Printer For Essential ID Card Printing Needs

- Intuitive printer dashboard lets you see printer status, order supplies, check cleaning status, update firmware, contact help, or access other helpful resources, all from your mobile device
- Innovative patented printhead protector feature shields the printhead during ribbon replacement or printer servicing, which helps to extend the printhead life. Easily fix the issue at hand without having to worry about damaging the printhead



ENTRUST

SECURING A WORLD IN MOTION

Unmatched Security

- Secure boot protects system from malware or virus on boot-up
- Connection and data sent between software and printer is encrypted
- Customer data is encrypted and is not stored in the printer after printing is complete

Essential Printing With Excellent Quality

- Choose on-premises or cloud-hosted deployment
- Expand your ID program as your needs change by adding magnetic stripe and smart card capabilities
- Print anytime, anywhere with your mobile device (iOS, Android, Windows)



Technical Specifications

Standard Features & Supplies	
Print technology	Dye sublimation
Print capabilities	Single or Dual-sided
Print resolution	300 dots per inch (dpi) (300 X 600, 300 X 1200)
Print speed	Single-sided color ribbon: Up to 185 cph (cards per hour) Double-sided color ribbon: Up to 145 cph Single-sided monochrome printing: Up to 750 cph Double-sided monochrome printing: Up to 421 cph
Card capacity	Input hopper – 100 cards Output hopper – 25 cards
Card sizes	Thickness: 0.024 inches to 0.040 inches (0.609 mm – 1.1016mm) Dimension: ID-1, CR-79, CR -80
Operating environment	Temperature: 60°F to 95°F (15°C to 35°C) Humidity: 20%-80% RH – non-condensing
Physical dimensions	L 17.5" x W 8.4" x H 9.0" / 44.5 cm x 22.6 cm x 22.9 cm
Included Software	Instant ID Trial: 30 Days (Simplex or Duplex) Instant ID as a Service Trial: 60 Days (Duplex Only)
Weight	12.1 lbs (5.49 kg)
Connectivity	USB – simplex USB and Ethernet - duplex
Warranty	24 months
Operating system support for printer driver	Windows 11 Windows 10, 32- and 64-bit Windows Server 2022 Windows Server 2019 Linux Ubuntu 20.04 LTS Linux Kylin 10

Optional Features & Supplies

Magnetic stripe encoding	ISO 7811 three-track support (high- and low-coercivity) JIS Type II single-track option										
Smart Card Encoding*	Loosely coupled: <ul style="list-style-type: none"> Contact smart card encoding: ISO 7816 T=0 (T=1), Class A 5V (3V and 1.8V) Contactless smart card encoding: ISO 14443 A/B, ISO 15693, MIFARE, MIFARE DESFire EV1/EV2, HID Prox, iClass, iClass SE, iClass Seos, Felica 										
Color ribbons**	<table> <tr> <td>YMCKT</td> <td>250/500 images</td> </tr> <tr> <td>ymcKT</td> <td>650 images</td> </tr> <tr> <td>YMCKT-KT</td> <td>350 images</td> </tr> <tr> <td>ymcKT-KT</td> <td>435 images</td> </tr> <tr> <td>YMCKT PET-G</td> <td>250 images</td> </tr> </table> <p>*Prefilled cassettes are not supported.</p>	YMCKT	250/500 images	ymcKT	650 images	YMCKT-KT	350 images	ymcKT-KT	435 images	YMCKT PET-G	250 images
YMCKT	250/500 images										
ymcKT	650 images										
YMCKT-KT	350 images										
ymcKT-KT	435 images										
YMCKT PET-G	250 images										
Monochrome ribbons	Black standard & premium, white standard & premium, silver standard, gold standard, silver premium metallic, and gold metallic: 2,500 images										

*Compatibility with specific features of new card technologies should always be confirmed.

**Color ribbon guide: Y=Yellow, M=Magenta, C=Cyan, K=Black, T=Topcoat, y=1/2 panel Yellow, m=1/2 panel Magenta, c=1/2 panel Cyan,

Panel print ribbon yields stated are typically the maximum number of panel sets per roll.

Monochrome print ribbon yields stated at 2,500 is the estimated image yield per roll for industry average personalization of 1.95in (49mm) print length.

Actual yields may vary based upon print length and other factors.